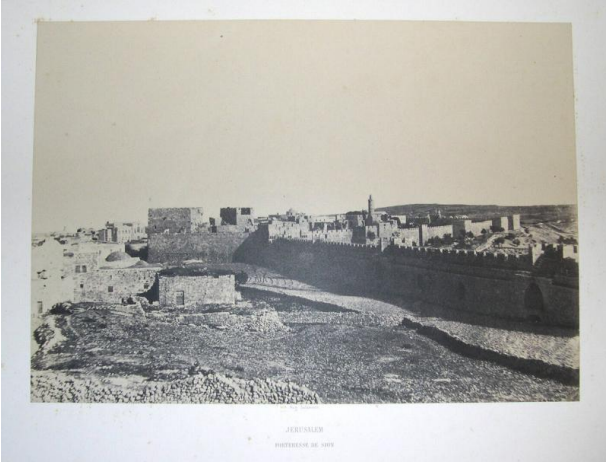


Basic Detail Report



Jérusalem, Forteresse de Sion

Date

1854

Primary Maker

Auguste Salzmann

Medium

Blanquart-Evrard process prints

Dimensions

Image Size: 9 3/16 x 13 1/8 inches Mat Size: 22 x 28 Object Size: 17 11/16 x 23 3/4 inches