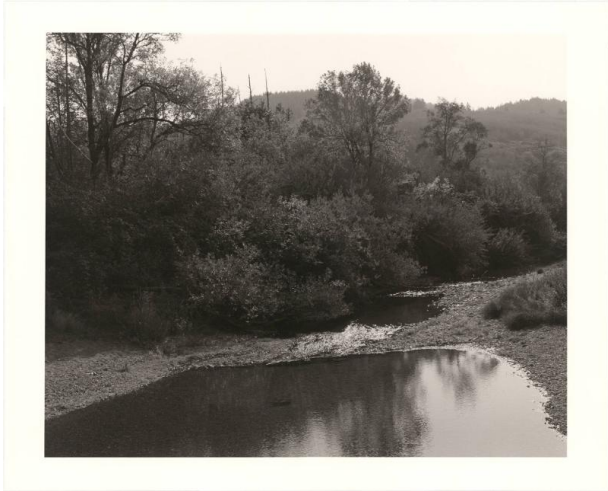


Basic Detail Report



71. Floras Creek, Curry County, Oregon. Research in South America has shown that the slow release of moisture held by some coastal forests is important to the formation of clouds that then take rain inland. Coastal deforestation is thus believed to contribute to climate change and desertification. From Turning Back,

A Photographic Journal of Re-exploration

Date

1999-2003

Primary Maker

Robert Adams

Medium

Gelatin silver print on paper

Dimensions

Mat Size: 20 x 25 inches